

**Find our friends and tick the box. Fill in our names and say what animals we are.**

**Hi. I am about to do some cooking. Have a look in the fridge and cupboards and answer the questions.**

**I have been trying to make a castle with gravel but what I really need is \_\_\_\_\_.**



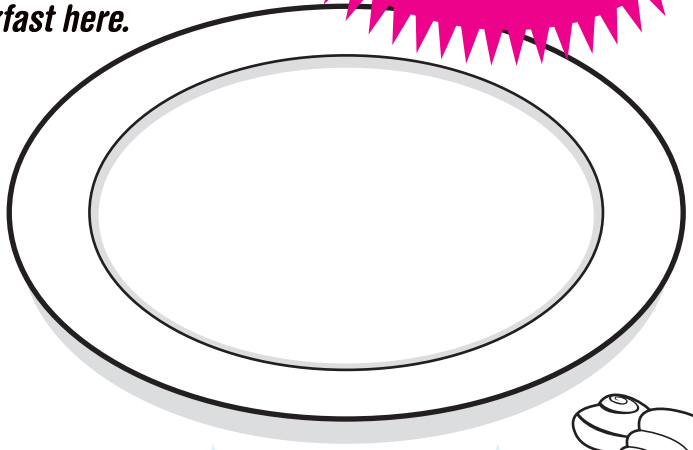
**What can you find to drink?**

**What would you eat off?**

**What would you like for your tea?**

**L \_\_\_\_\_**  
**L \_\_\_\_\_**

*Draw breakfast here.*



**S \_\_\_\_\_**  
**S \_\_\_\_\_ H \_\_\_\_\_**

*Draw a sandcastle.*

**Look at the container ship and count the coloured cars and lorries.**

Orange

Red

White

Blue

*Draw your favourite car or lorry.*

**W \_\_\_\_\_**  
**W \_\_\_\_\_**

**What is written on my lifebelt? \_\_\_\_\_**

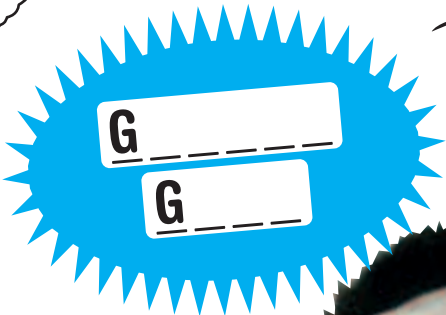


I am going off on my holidays.

What have I got to help me find my way? \_\_\_\_\_

List the objects on the map. \_\_\_\_\_

Can you guess what is in my pack? \_\_\_\_\_



How many side plates  cups  jugs   
and bottles  can you find in this case?



I am dressed for dinner.  
What colours am I wearing?

There are four teapots on this table.  
What shape are they?

Draw the plate pattern.



Draw some of the carpet pattern.



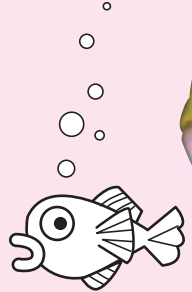
P \_\_\_\_\_  
P \_\_\_\_\_

How many drawers do I have in my trunk?

\_\_\_\_\_

Draw one of the things I might need for my night out.

M \_\_\_\_\_  
M \_\_\_\_\_

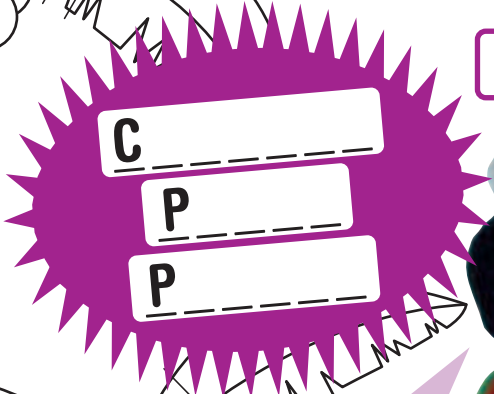
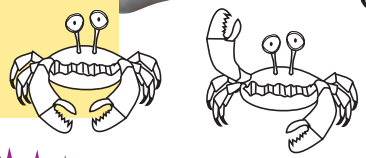




D \_\_\_\_\_

What am I wearing on my head?

H \_\_\_\_\_



C \_\_\_\_\_

P \_\_\_\_\_

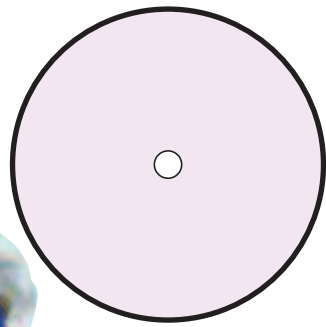
P \_\_\_\_\_

What am I wearing?

\_\_\_\_\_



Draw the time in here.



R \_\_\_\_\_

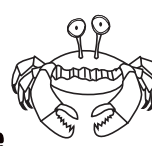
I am wearing a sou'wester on my head and an oilskin jacket to keep me dry.

What other clothes can you see?

\_\_\_\_\_  
\_\_\_\_\_

What do you wear to keep dry?

\_\_\_\_\_



What sort of party are the people in the picture going to?

\_\_\_\_\_

If you were going to a party like this, what would you go as?

\_\_\_\_\_

List things you could do on a cruise.

\_\_\_\_\_  
\_\_\_\_\_  
\_\_\_\_\_  
\_\_\_\_\_  
\_\_\_\_\_

I am learning to be a sailor, so I am a cadet. When we go camping we sleep in a T\_\_\_\_\_.

Can you name any of the instruments from our band?

\_\_\_\_\_  
\_\_\_\_\_

Can you play an instrument?

\_\_\_\_\_



M \_\_\_\_\_

M \_\_\_\_\_

Draw yourself as a cadet.



Look around. What do you think I do when I am not working?

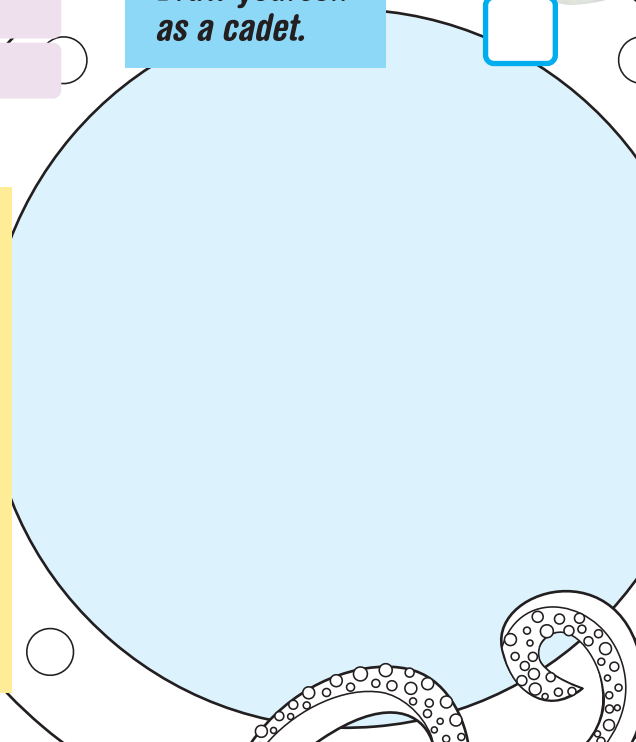
a \_\_\_\_\_

d \_\_\_\_\_

b \_\_\_\_\_

e \_\_\_\_\_

c \_\_\_\_\_



How many legs have I got?

Where do I sleep?

H \_\_\_\_\_

Where do you sleep?

Where do I keep my things?

C \_\_\_\_\_



0

0

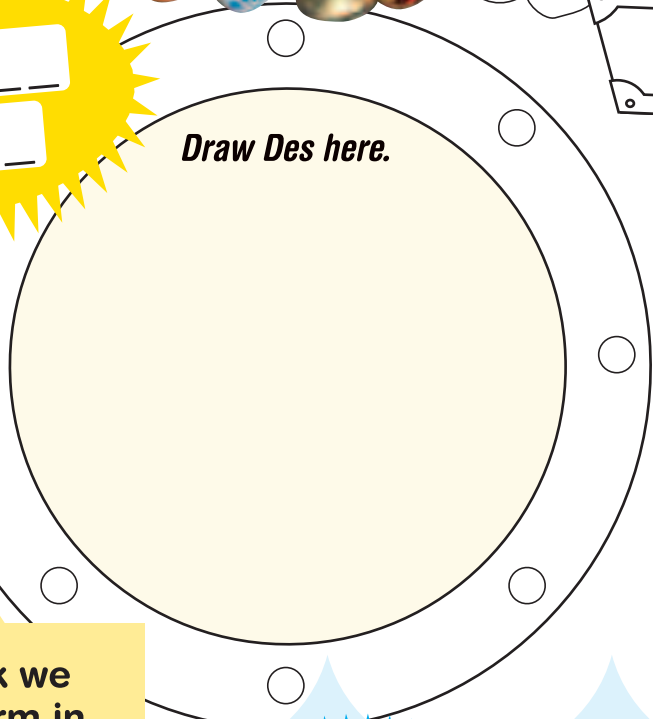
Can you find Ossie's bedtime kit?  
pillow hottie toothbrush  
mug candle clock  
teddy book nightcap

r c a n d l e p o l  
h g n i g h t c a p  
o c f b t e d d y m  
t l b c a l x m k w  
t o o t h b r u s h  
i c o z d k w g n q  
e k k p i l l o w y

D \_ \_ t

d

Draw Des here.



How many of these can you see on the ship behind us?

Portholes

Lifeboats

Masts

Anchors

Propellers

What letters are on the funnel? \_ \_

How do you think we get to our platform in the middle of the sea?

H \_\_\_\_\_

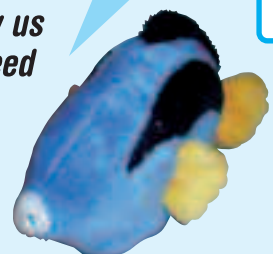
How many ladders can you count?

F

&

F

Please draw us some seaweed and shells.



National Museums Liverpool  
Museums Liverpool National  
Liverpool National M

Merseyside  
**maritime  
museum**

National  
Museums  
Liverpool

