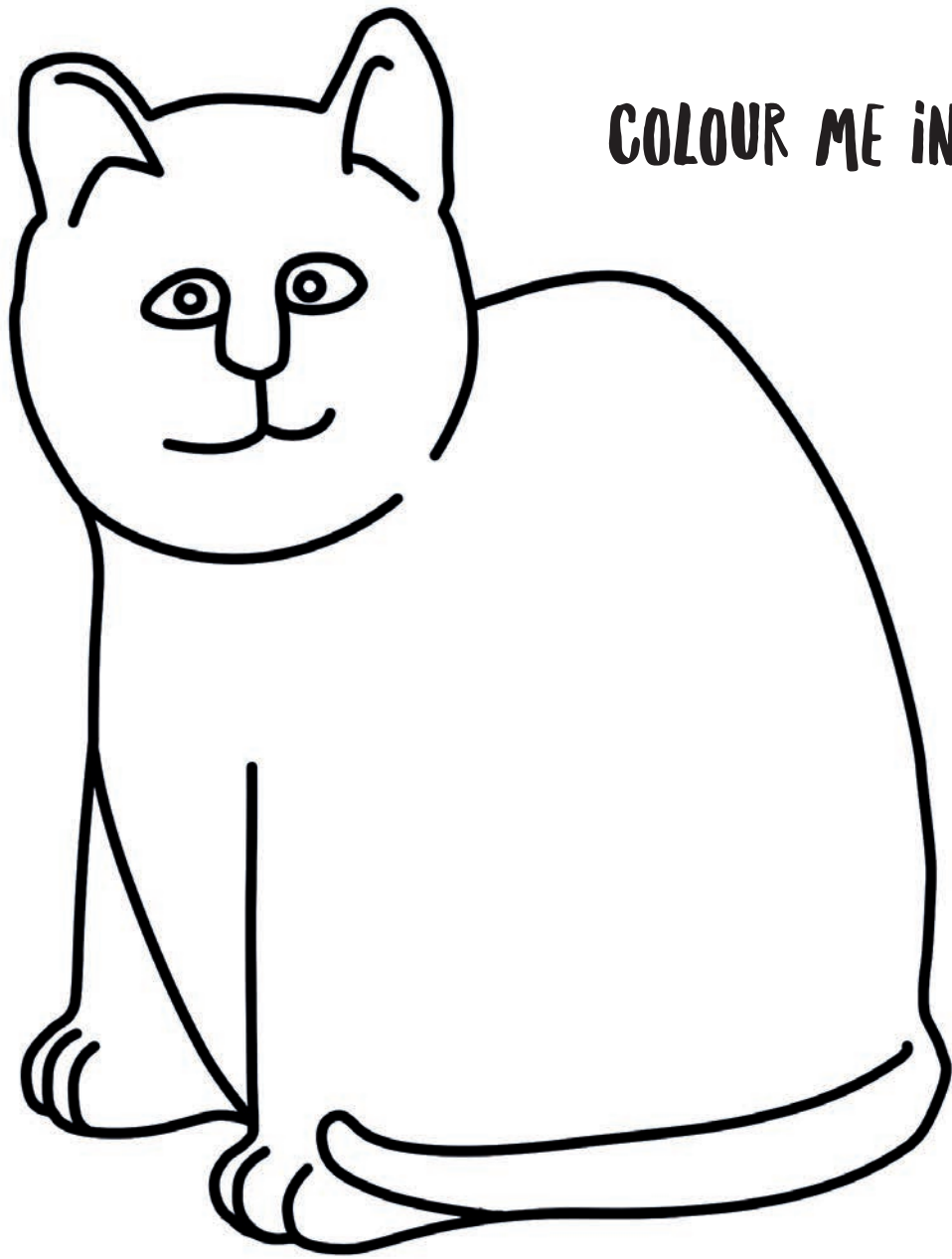
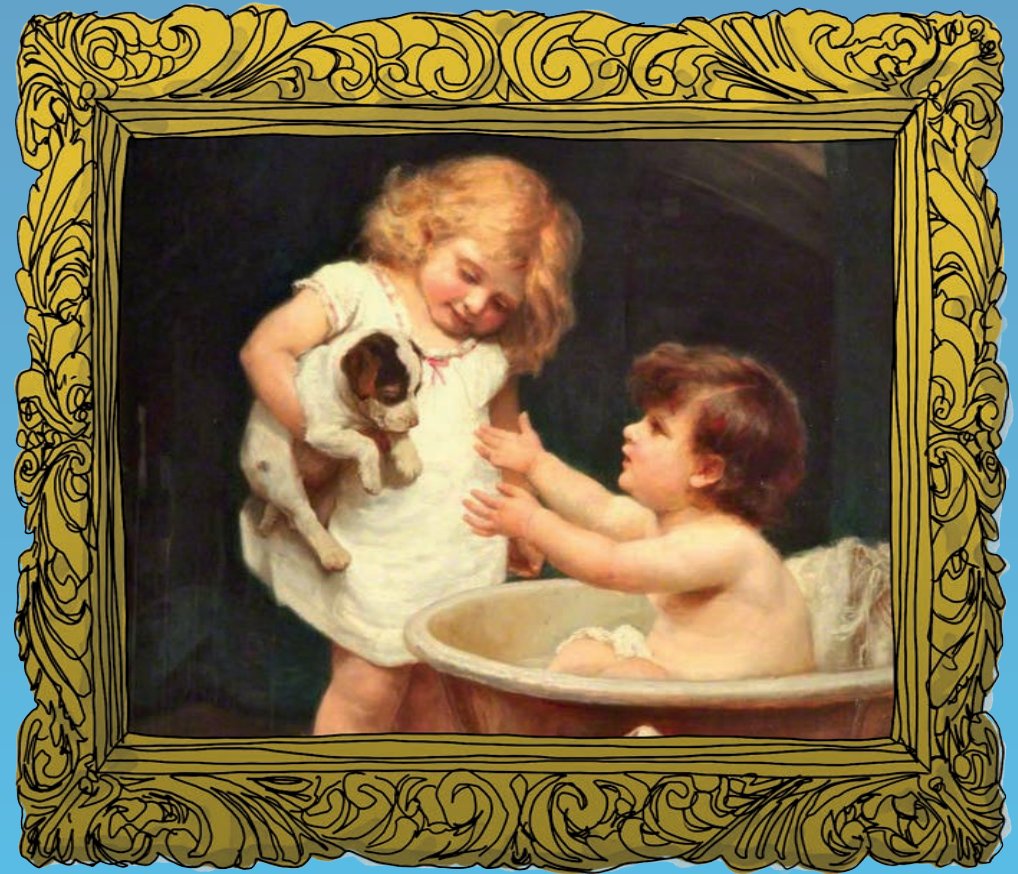


COLOUR ME IN



TREASURE TRAIL ANIMALS



His Turn Next
by Frederick Morgan

Room 10 (Main Hall)

Lord Leverhulme, who founded the Lady Lever Art Gallery, kept a zoo with all kinds of **animals** from around the world at his home in Rivington Pike.

His art collection also has a lot of animals!

Explore the Gallery to find these animals and shade each circle when you have found them.

Room 30

Look for the **lion** with a thorn stuck in his paw.



Chimneypiece

Can you see the other lions in this room?
Roar like a lion!

Room 4 (Wedgwood)



Sugar dish and cover

A little **crocodile**, snap, snap, snap!

What would you keep in a crocodile dish?

Room 26

Can you spot the cheeky **frog** hiding in a mug?



Why do you think the frog is hiding in the mug?

Hop like a frog!

Masonic mug with frog

Room 10 (Main Hall)

Look for the **horse** and **lamb**, nibbling on the grass.

What other animals can you see on Cromwell's farm?



Cromwell on his Farm by Ford Madox Brown

Room 1

Can you find this giant **eagle**?

What do you think this is made of?

What can you spy with your eagle eye?



Eagle table

Room 7

A colourful **cat**!



Figure of a cat

What colour is the cat's fur?
What's your favourite colour?